



# → THE EVER GROWING USE OF COPERNICUS ACROSS EUROPE'S REGIONS

A selection of 99 user stories by local and regional authorities





# → THE EVER GROWING USE OF COPERNICUS ACROSS EUROPE'S REGIONS

**A selection of 99 user stories by local and regional authorities**



Copernicus in a nutshell	18
Copernicus Sentinels in a nutshell	19
Copernicus progress since the 2012 edition	20
Introduction	22
Copernicus User Stories Geographic Index: main areas of application as described in the user stories	29
<b>AGRICULTURE, FOOD, FORESTRY AND FISHERIES</b>	
Introduction	36
Overview	38
<b>Agriculture CAP Subsidies Control</b> <i>VAITKUS, Gediminas</i>	42
<b>Agricultural Damage Mapping in Hungary</b> <i>NÁDOR, Gizella; FRIEDL, Zoltán; ROTTERNÉ KULCSÁR, Anikó; HUBIK, Irén; PACSKÓ, Vivien; SUREK, György</i>	44
<b>Agriculture Monitoring Using Sentinel Images</b> <i>LUCAU-DANILA, Cozmin; BERIAUX, Emilie; LETEINTURIER, Béatrice</i>	46
<b>Copernicus Data and CAP Monitoring in Romania</b> <i>FLUERARU, Cristian; CUCU-DUMITRESCU, Catalin; BUDILEANU, Marius; COPACENARU, Olimpia; SERBAN Florin</i>	48
<b>Earth Observation Data to Detect Irrigated Areas: an Application in Southern Italy</b> <i>DE MICHELE, Carlo; FALANGA BOLOGNESI, Salvatore; BELFIORE, Oscar Rosario</i>	50
<b>Earth Observation for Smart Farming and CAP Performance</b> <i>MARIANOS, Nikolaos; KALATZIS, Nikolaos; SYKAS, Dimitrios</i>	52

<b>Reinforcing the Common Agriculture Policy</b> <i>ARMESTO ANDRÉS, Ana Pilar; LAFARGA ARNAL, Alberto; PETALIOS, Dimitrios; PAPOUTSIS, Ioannis; SITOKONSTANTINOY, Vasileios</i>	54
<b>Sentinels for Flood and Yield Loss Mapping</b> <i>ATSTAJA, Zane; IJABS, Harijs; GRINEVICS, Juris</i>	56
<b>Sentinels Verify Agricultural Subsidies</b> <i>VOORMANSIK, Kaupo; RAUDVERE, Kai</i>	58
<b>A Farmsourcing Platform for a Smart Nitrogen Management</b> <i>CURNEL, Yannick; GOFFART, Dimitri; PLANCHON, Viviane; GOFFART, Jean-Pierre; DELLOYE, Cindy; DEFOURNY, Pierre</i>	60
<b>A New Detailed Crop and Natural Land Map</b> <i>NAFRÍA, David A.; DEL BLANCO, Vicente; PAREDES, Vanessa; RODRÍGUEZ, Óscar O.; BENGGOA, José L.</i>	62
<b>Closing the Yield Gap with Calibrated Crop Maps from Germany</b> <i>HUETTICH, Christian; DAHMS, Thorsten; CONRAD, Christopher et al.</i>	64
<b>Copernicus Supports Precision Farming for an Apulian Vineyard</b> <i>IASILLO, Daniela; RIEU, Guillaume; PALUMBO, Giuseppe</i>	66
<b>Copernicus for Efficient Farming in the Western Cape of South Africa</b> <i>GOUDRIAAN, Ruben</i>	68
<b>Crop Condition Monitoring at Field Level</b> <i>GHAZARYAN, Gohar; DUBOVYK, Olena; GRAW, Valerie; KUSSUL, Nataliia; SCHELLBERG, Jürgen</i>	70
<b>EO-Based Agro Monitoring System to Support Regional Decision-Making</b> <i>GRANELL, Carlos; CASTELEYN, Sven; Busetto, Lorenzo; PASCUCCI, Simone; GARCÍA-HARO, Javier; GITAS, Ioannis; HOLECZ, Francesco; et al.</i>	72

## EO-BASED AGRO MONITORING SYSTEM TO SUPPORT REGIONAL DECISION-MAKING

*The ERMES FP7 project's downstream services provide decision and policy makers with high-quality, large-scale information on crop evolution and yield forecasting.*

### The challenge

There is an increasing demand for systems able to provide Near Real Time (NRT) information on crop condition and timely yield forecasts, given the potential interest for a variety of authorities within the agricultural sector, including private companies and institutional stakeholders. Such operational agro-monitoring systems, able to deliver timely early warnings and yield forecasting maps over large areas, may provide decision makers with information on seasonal dynamics and potential crop production shortages, useful to monitor agro policies, coordinate relief initiatives and control food prices' volatility. Nevertheless, they form a major technological challenge, as they require the gathering and integrating of huge amounts of information derived from remote sensing, weather and modelling data, and then the presenting of this processed, multi-scale, temporary variable data as actionable information to the end users in a useful, understandable and user friendly way.

### The space based solution

Our focus was on developing a platform able to create, manage and disseminate NRT spatialised maps derived from the integration of remote sensing images, weather data and crop modelling solutions. We used free-of-



ERMES regional geoportal interface showing the rice map for the Spanish Mediterranean area. Users get access to a variety of products from crop monitoring from the eye icon on the left side.

charge satellite imagery and EO products from the European Copernicus Programme (e.g. Sentinel-1/2A data, SPOT/VEGETATION - PROBA-V (GEOV1) LAI) and NASA (e.g. MODIS and OLI data) to: i) assess the seasonal extent of rice cultivated area and agro-practices, ii) estimate occurrence of phenological stages, and iii) retrieve crop leaf area index to highlight anomalous conditions of rice development in the on-going season. Customised regional products from the Water Accounting Rice Modelling (WARM) solution were current and forecasted biotic risks for rice cultivations and yield forecasts obtained from the assimilation of EO data and statistical post-processing of model simulations.

Timely and user-friendly dissemination and delivery of these products to stakeholders were as relevant and fundamental as the products themselves to accomplish the expected benefits and impacts. A regional geoportal was specifically developed to allow efficient access to the rice-monitoring information produced for regional services.

### Benefits to Citizens

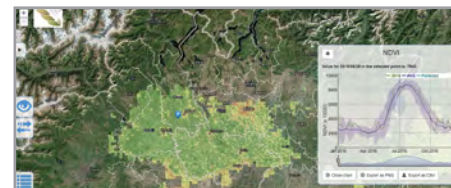
Adoption of the ERMES regional products can surely be beneficial for many distinct European stakeholders, including public authorities

“The ERMES product of blast infection risk is more useful than others, such as the estimation of blast risk occurrence derived from in-situ measurements.”

### Regione Lombardia

(e.g. regions, provinces, environmental protection agencies, etc.) with the mandate of i) monitoring cultivated surface and yield, ii) implementing agro-policies, and iii) providing information to farmers concerning potential risks of biotic/a-biotic injuries or suggesting best-practices for cultivation.

For example, the ERMES regional geoportal provided spatially explicit NRT information on rice season development together with biotic/abiotic risk at regional/district scale. Rice crop maps allow regional authorities to understand the spatial distribution of rice cultivation practices and their inter-annual variations, obtaining initial estimates of the total area earlier than official statistics obtained from CAP subsidies declaration.



ERMES regional geoportal showing Normalized Difference Vegetation Index (NDVI) map and temporal trends for the Regione Lombardia (Italy).

### Outlook to the future

The regional geoportal offers downloadable products and charts to support both additional analysis and production of crop monitoring bulletins. For example, a public agency of the Lombardy Region produces daily bulletins

AGRICULTURE,  
FOOD, FORESTRY  
AND FISHERIES



of current and forecasted risk of rice blast infection aggregated at municipality scale ([www.ersaf.lombardia.it/servizi/bollettini/index.aspx](http://www.ersaf.lombardia.it/servizi/bollettini/index.aspx)).

Private insurance companies in the agricultural sector, traders/millers or large cooperatives of farmers could also benefit from ERMES products and tools to deliver added-value services. A major Italian insurance company, for example, delivers risk information derived from the ERMES agro-monitoring regional service to its customer pool as a support to reduce the risk of yield losses.

### Acknowledgements

This work was supported by the EU 7th Framework Programme (FP7/2007-2013) under Grant 606983 - ERMES project.

- C. Granelli<sup>1</sup>, S. Casteleyn<sup>1</sup>, L. Busetto<sup>2</sup>, S. Pascucci<sup>3</sup>, J. Garcia-Haro<sup>4</sup>, I. Gitas<sup>5</sup>, F. Holecz<sup>6</sup>, D. Katsantonis<sup>7</sup>, R. Confalonieri<sup>8</sup>, M. Boschetti<sup>2</sup>
1. Geospatial Technologies Research Group - Univ. Jaume I, Spain
  2. Institute for Electromagnetic Sensing of the Environment, Italian National Research Council, (CNR-IREA), Italy
  3. Institute of Methodologies for Environmental Analysis, Italian National Research Council, (CNR-IMAA), Italy
  4. Department of Earth Physics and Thermodynamics, Faculty of Physics, Universitat de València, Spain
  5. Laboratory of Forest Management and Remote Sensing, Aristotle University of Thessaloniki, Greece
  6. sarmap SA, 6989Purasca, Switzerland
  7. Hellenic Agricultural Organization (DEMETER)
  8. Università degli Studi di Milano, DESP, Cassandra lab  
Email: [boschetti.m@irea.cnr.it](mailto:boschetti.m@irea.cnr.it)